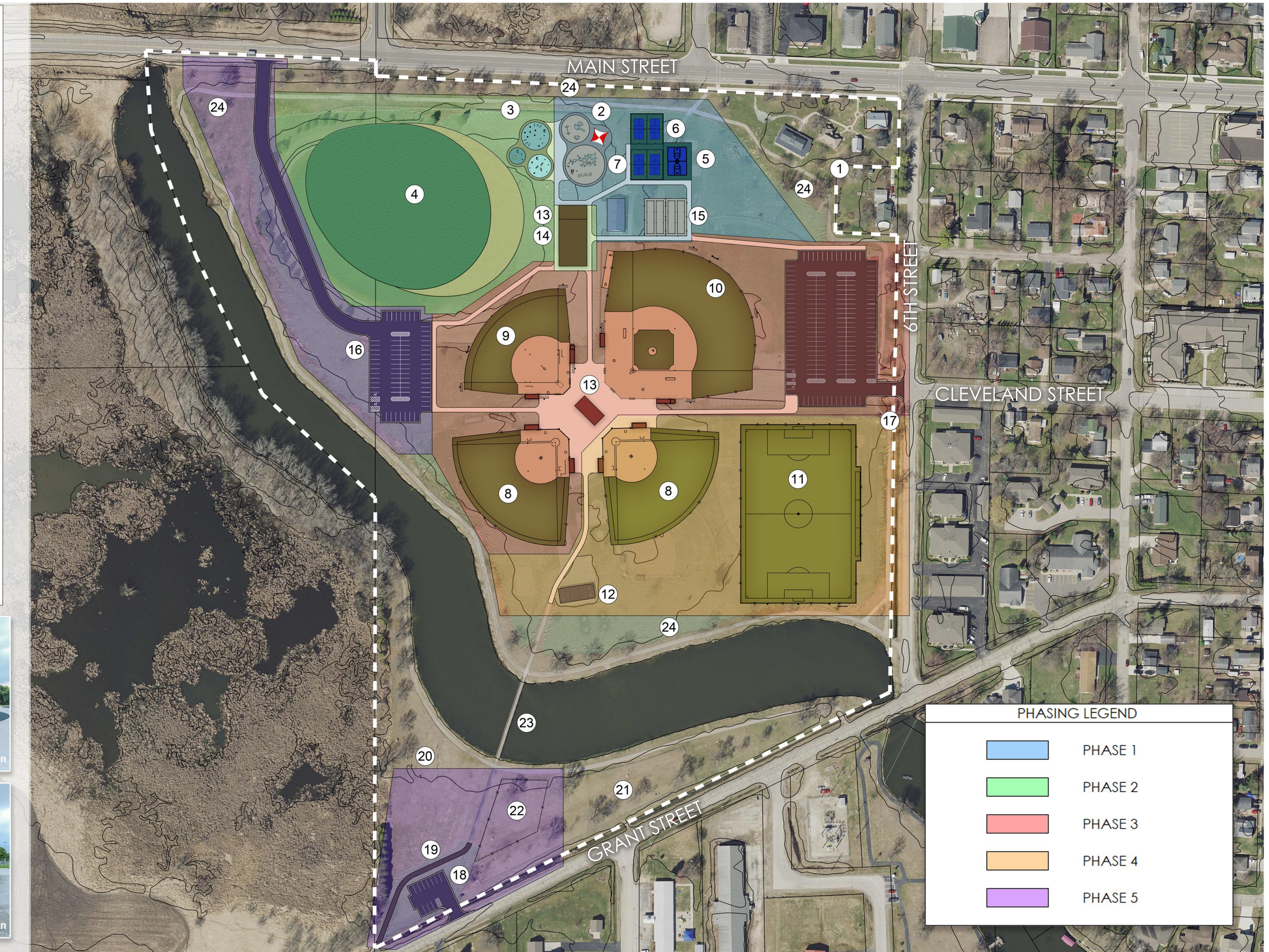


KEYNOTES

- ① WINNECONNE HISTORICAL SOCIETY MUSEUM VILLAGE
- ② PLAYGROUND
- ③ SPLASH PAD
- ④ MODIFIED POND AND BEACH
- ⑤ BASKETBALL COURT
- ⑥ EXISTING PICKLEBALL COURTS
- ⑦ ADDITIONAL PICKLE BALL COURTS
- ⑧ 210' YOUTH BASEBALL FIELD
- ⑨ 200' SOFTBALL FIELD
- ⑩ 290' BASEBALL FIELD WITH SKINNED INFIELD
- ⑪ 225'X360' MULTIPURPOSE FIELD
- ⑫ UPDATE SHELTER/STORAGE BUILDING
- ⑬ CONCESSION/RESTROOM BUILDING
- ⑭ OPEN SHELTER
- ⑮ BATTING CAGES
- ⑯ MAIN STREET ENTRY AND PARKING (64 SPOTS)
- ⑰ CLEVELAND STREET ENTRY AND PARKING (181 SPOTS)
- ⑱ GRANT STREET ENTRY AND PARKING (12 SPOTS)
- ⑲ TRAIL CONNECTION
- ⑳ ARCHERY
- ㉑ DOG PARK
- ㉒ SMALL DOG PARK
- ㉓ PEDESTRIAN BRIDGE
- ㉔ PERIMETER TRAIL



PHASING LEGEND	
	PHASE 1
	PHASE 2
	PHASE 3
	PHASE 4
	PHASE 5

VILLAGE OF WINNECONNE
ARTHUR MARBLE PARK ■ MASTER PLAN - PHASING
639 W MAIN ST. ■ WINNECONNE, WI 54986

